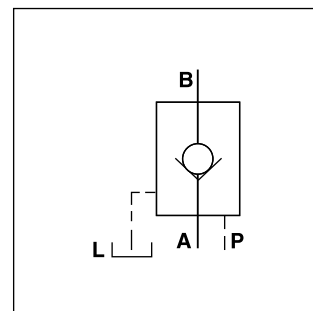
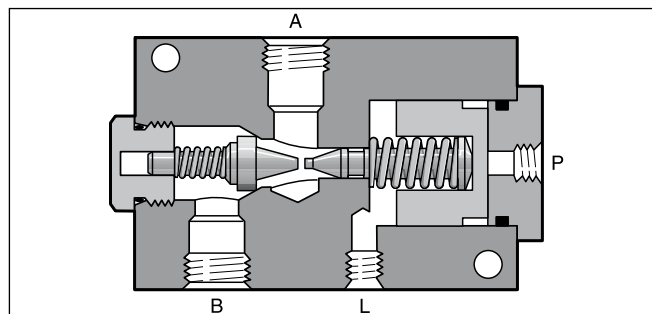
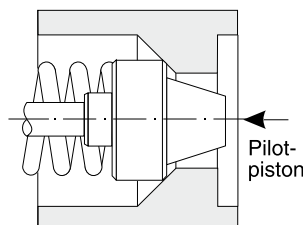


Pilot operated check valves series CP allow free flow in one direction (A to B).

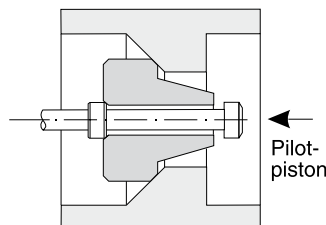
The counter direction (B to A) is blocked. By applying pilot pressure, the poppet can be lifted from its seat against the pressure in port B. Thus flow in the counter direction is also possible. There are 1 and 2 stage poppets available with pilot ratios of 1 : 5 and 1 : 40, to suit different operating conditions.

**Technical data**

Size		600	1200
Max. operating pressure	[bar]	210	210
Max. pilot pressure	[bar]	210	70
Flow $Q_{max}$ at $\Delta p$ 2.7 bar	[l/min]	30	95
Nominal size		3/8	3/4
Weight	[kg]	4	7

**Pilot ratios****Poppet 1 stage**

Surface ratio 5 : 1 (pilot spool-poppet surface) for quick response time without decompression.

**Poppet 2 stage**

Surface ratio 40 : 1 (pilot spool decompression pin surface) for low shock or oscillation performance from decompression.

**Ordering code**

Thread type

CP

Check valve, pilot operated

Port size

S

Steel body

Pilot ratio

M

Steel poppet

Seal

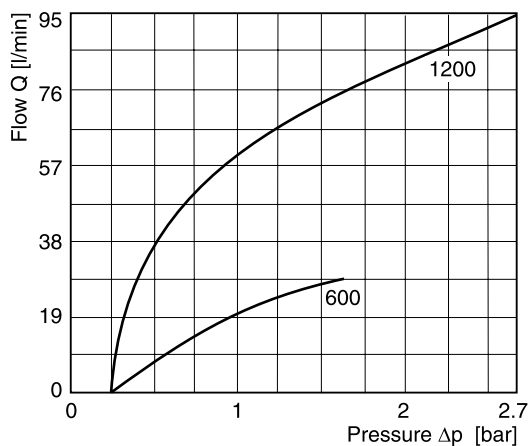
Code	Thread
omit	NPTF
9	BSPP

Code	Size
600	3/8
1200	3/4

Code	Seal
omit	NBR
V	FPM

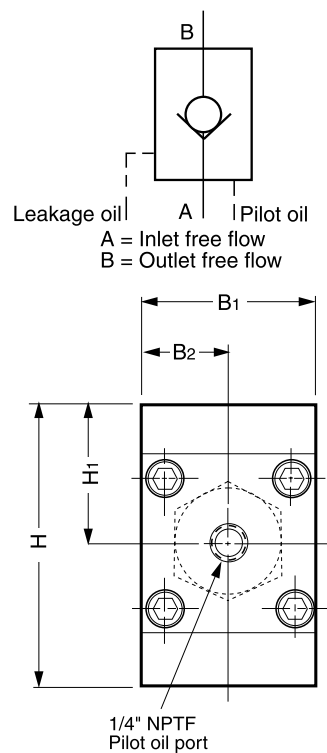
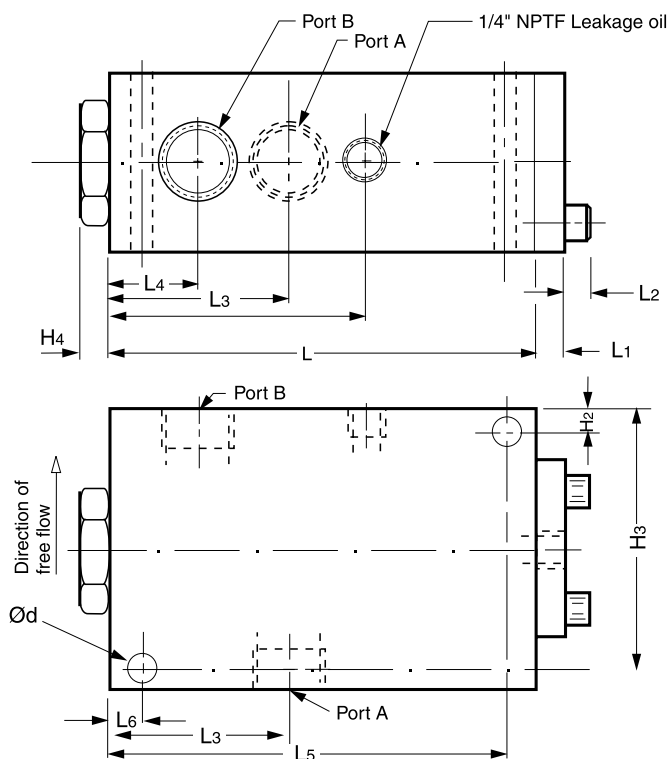
Code	Pilot ratio	Stage
5	5 : 1	1
40	40 : 1	2

**Bold letters =**  
Short-term availability

$\Delta p/Q$  performance curves

All characteristic curves measured with HLP46 at 50 °C.

## Dimensions



Size	A, B	L <sub>3</sub>	B <sub>1</sub>	B <sub>2</sub>	H <sub>1</sub>	H	L <sub>4</sub>	L <sub>7</sub>	H <sub>4</sub>	L	L <sub>1</sub>	H <sub>2</sub>	H <sub>3</sub>	L <sub>6</sub>	L <sub>5</sub>	Ød	W
9CP600S	G3/8	53.3	50.8	25.4	38.1	76.2	25.4	76.2	10.4	120.7	10.7	9.4	66.5	9.4	111	9.1	-
9CP1200S	G3/4	63.5	63.5	31.8	50.8	101.6	31.8	91.2	10.7	152.4	11.43	11.2	90.4	11.2	141.2	10.7	7.9