

PV-11 1/2" Pneumatic 2 Way Valve

Product Overview

The PV-11 PFA Diaphragm Valve is designed for use in high purity semiconductor applications. It is also ideally suited for ultra-pure water and aggressive chemical or gas applications. The design utilizes a molded high purity PFA body with precision machined areas. A one piece machined modified PTFE diaphragm is also utilized for excellent flexibility and life. A full 1/2" orifice provides maximum flow capability in a compact package.



Features

One piece precision machined diaphragm manufactured from the latest technology modified PTFE. Provides over five times the flexural life as compared to conventional PTFE.

Tongue and groove seat and diaphragm for positive through flow shut off and diaphragm to body seal.

PVDF coated stainless steel spring.

Submersible option isolates all valve components from the external environment.

Benefits

High cycle life.

Lower replacement costs.

Less downtime.

Reduces effects of corrosive environments.

Valve remains functional while operating in wet or gaseous corrosive environments.

Specifications

Materials of Construction

Wetted: PFA, Modified PTFE

Non-wetted: PFA, PVDF, Viton seals, PTFE coated SS springs

Pressure Ranges

Forward: 27" HG vacuum (913 mbar) to 100 PSIG (7 bar)

Back: 80 PSIG (5.5 bar) with 80 PSIG (5.5 bar) inlet pressure

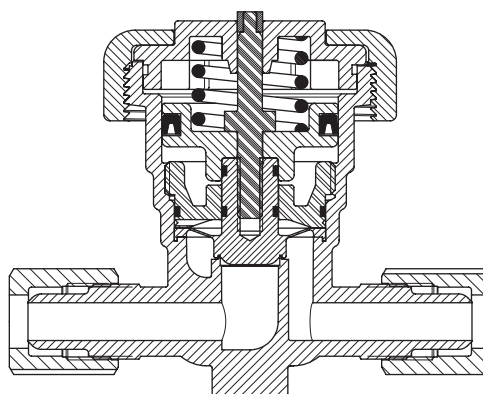
Actuator: 60 PSIG (4.2 bar) to 100 PSIG (7 bar)

Pressure ranges for operation at ambient temperatures. For use at higher temperatures consult Pressure/Temperature chart on page 3.

Temperature Ranges

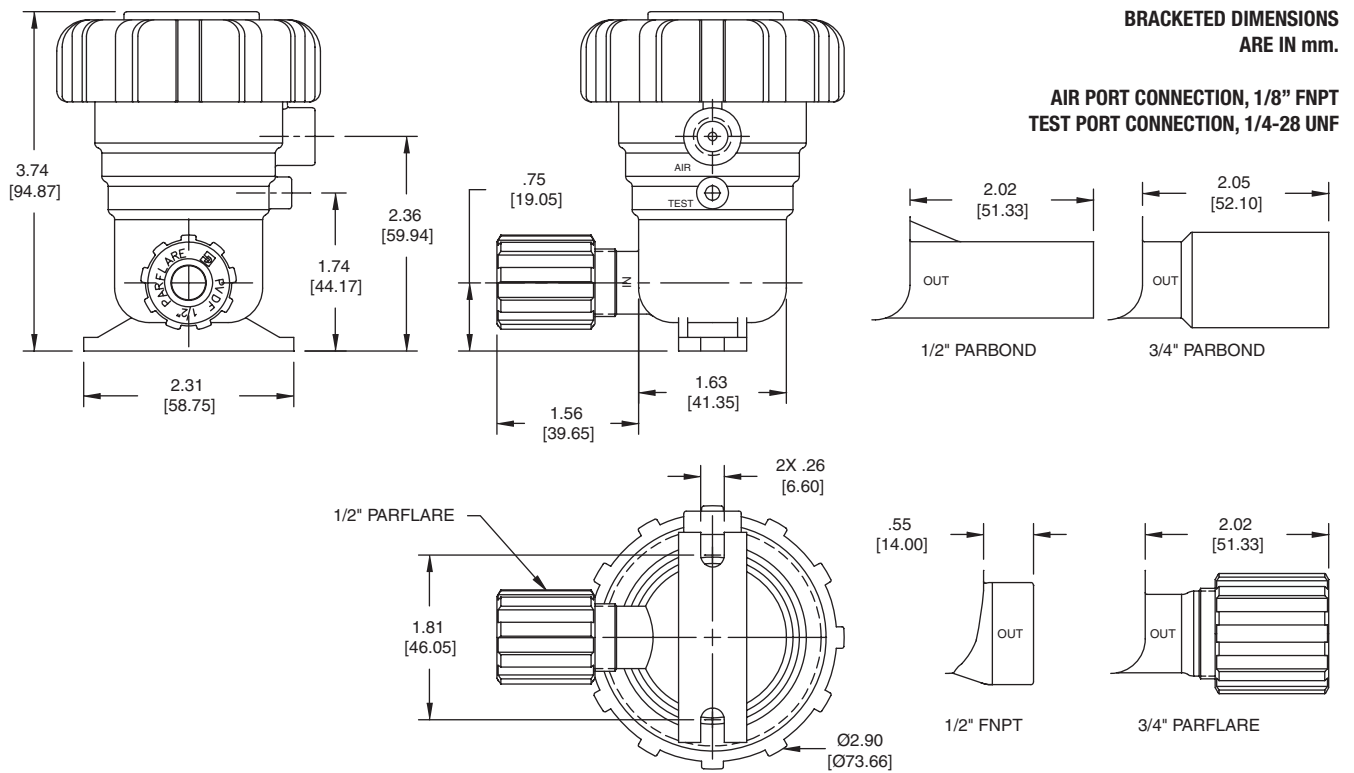
Ambient: 0° - 150° F (-17° - 66° C)

Fluid: 0° - 266° F (-17° - 130° C)



Normally Closed Shown

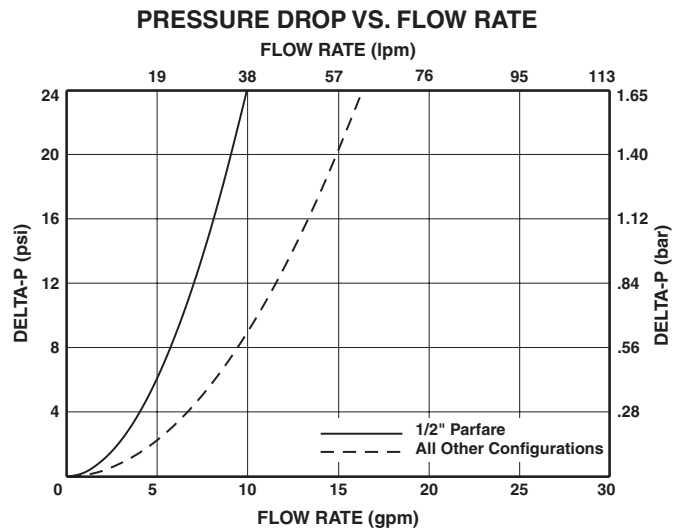
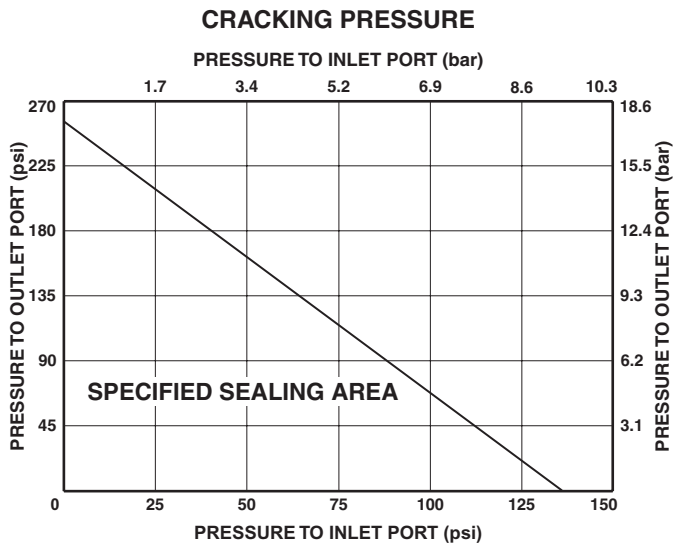
PV-11 1/2" Pneumatic 2 Way Valve



Model Number	Cv	Kv	Flow Config.	Port Config.
PV-11-001	2.3	32.8	N C	1/2" Parflare
PV-11-002	3.7	52.8		3/4" Parflare
PV-11-003	3.7	52.8		1/2" Parbond
PV-11-004	3.7	52.8		3/4" Parbond
PV-11-005	3.7	52.8		1/2" FNPT

Model Number	Cv	Kv	Flow Config.	Port Config.
PV-11-011	2.3	32.8	N O	1/2" Parflare
PV-11-012	3.7	52.8		3/4" Parflare
PV-11-013	3.7	52.8		1/2" Parbond
PV-11-014	3.7	52.8		3/4" Parbond
PV-11-015	3.7	52.8		1/2" FNPT

Parflare models are supplied with PVDF nuts. For PFA nuts add -T to model number.



PV-11 1/2" Pneumatic 3 Way Valve

Product Overview

The PV-11 PFA 3 Way Diaphragm Valve is designed for use in high purity semiconductor applications. It is also ideally suited for ultra-pure water and aggressive chemical or gas applications. The design utilizes a molded high purity PFA body with precision machined areas. One piece machined modified PTFE diaphragms are also utilized for excellent flexibility and life. A full 1/2" orifice provides maximum flow capability in a compact package.



Features

One piece precision machined diaphragms manufactured from the latest technology modified PTFE. Provides over five times the flexural life as compared to conventional PTFE. Tongue and groove seat and diaphragm for positive through flow shut off and diaphragm to body seal.

PVDF coated stainless steel springs.

Submergible option isolates all valve components from the external environment.

Multi-position mounting base.

Benefits

High cycle life.

Lower replacement costs.

Less downtime.

Reduces effects of corrosive environments.

Valve remains functional while operating in wet or gaseous corrosive environments.

Allows for more mounting flexibility and connector fitting reduction.

Specifications

Materials of Construction

Wetted: PFA, Modified PTFE

Non-wetted: PFA, PVDF, Viton seals, PTFE coated SS springs

Pressure Ranges

COM to NO: 27" HG vacuum (913 mbar) to 80 PSIG (5.5 bar)

NO to COM: 27" HG vacuum (913 mbar) to 80 PSIG (5.5 bar)

COM to NC: 27" HG vacuum (913 mbar) to 80 PSIG (5.5 bar) with 20 PSIG (1.4 bar) maximum back pressure

NC to COM: 27" HG vacuum (913 mbar) to 80 PSIG (5.5 bar) with 50 PSIG (3.4 bar) maximum back pressure

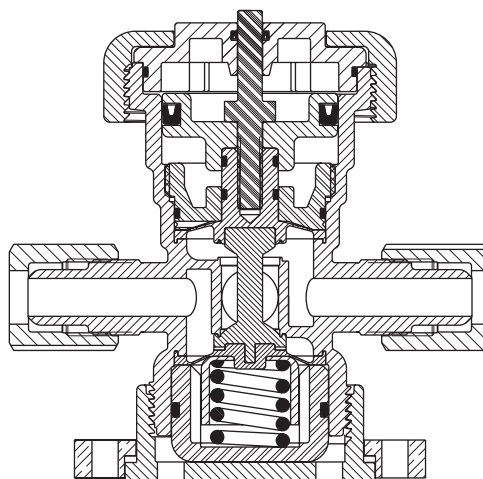
Actuator: 60 PSIG (4.2 bar) to 100 PSIG (7 bar)

Pressure ranges for operation at ambient temperatures. For use at higher temperatures consult Pressure/Temperature chart on page 3.

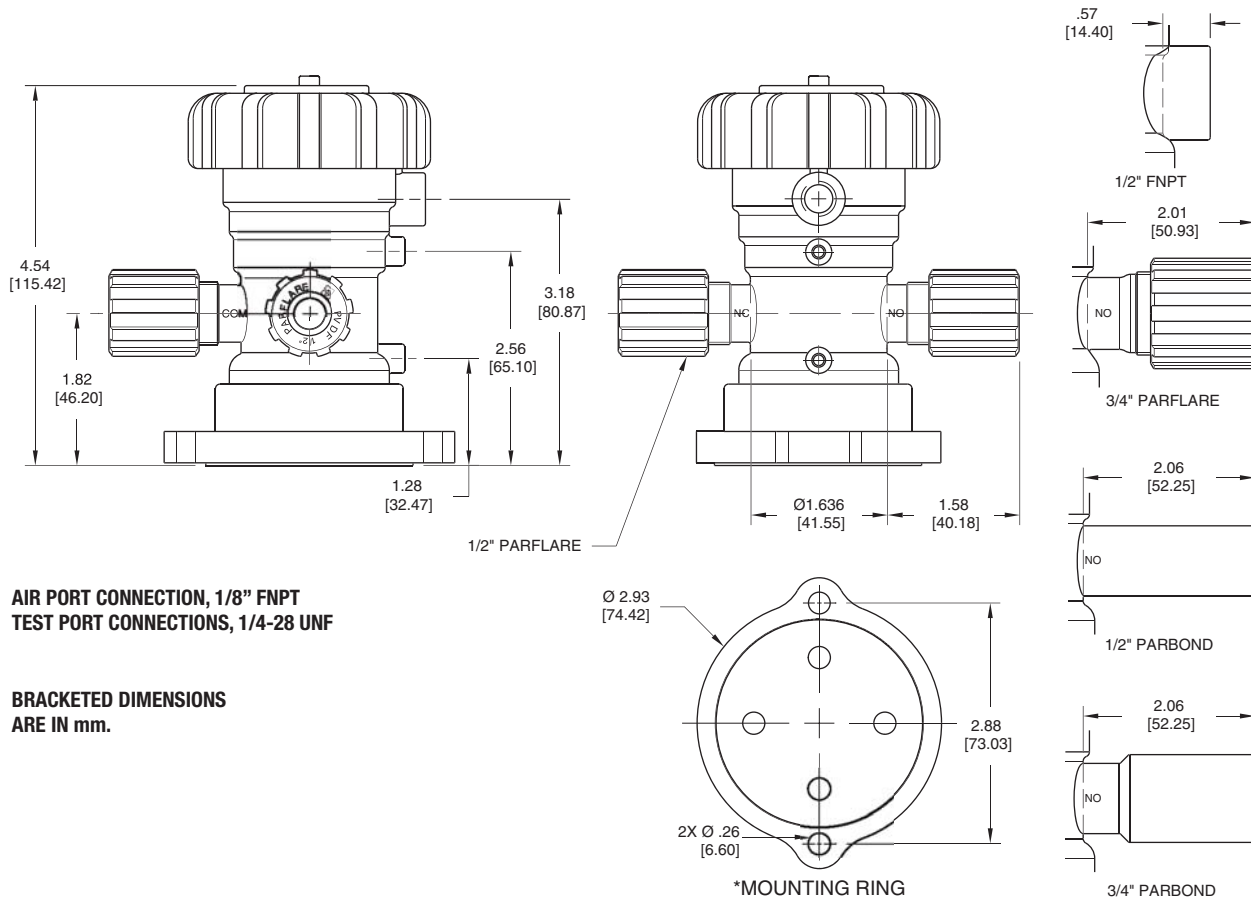
Temperature Ranges

Ambient: 0° - 150° F (-17° - 66° C)

Fluid: 0° - 266° F (-17° - 130° C)



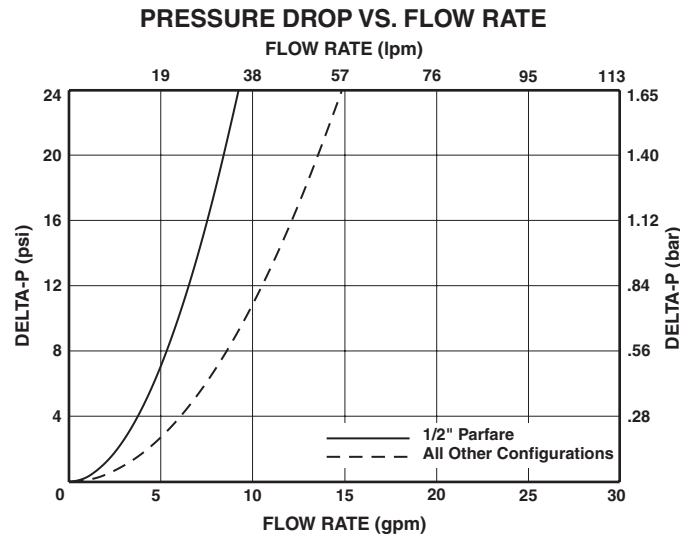
PV-11 1/2" Pneumatic 3 Way Valve



Model Number	Cv	Kv	Flow Configuration	Port Configuration
PV-11-021	1.9	27.1	3 WAY	1/2" Parflare
PV-11-022	2.8	40.0		3/4" Parflare
PV-11-023	2.8	40.0		1/2" Parbond
PV-11-024	2.8	40.0		3/4" Parbond
PV-11-025	2.8	40.0		1/2" FNPT

Parflare models are supplied with PVDF nuts. For PFA nuts add -T to model number.

*To order part without mounting ring add -01 to model number.



PV-11 1/2" Pneumatic Adjustable Bypass Valve

Product Overview

The PV-11 Adjustable Bypass Valve is designed for use in ultra-pure water applications. The design utilizes a molded high purity PFA body with precision machined seats. A machined modified PTFE diaphragm is also utilized for excellent flexibility and life. The integral bypass valve prevents the stagnation and deadheading of media in an ultra-pure water system.



Features

Precision machined diaphragm manufactured from the latest technology modified PTFE.

Provides over five times the flexural life as compared to conventional PTFE. Tongue and groove seat and diaphragm for positive through flow shut off and diaphragm to body seal.

PVDF coated stainless steel spring.

Bypass integral to valve body to prevent stagnation of ultra-pure water.

Modified flow configurations with numerous end connections including Parflare available.

Benefits

High cycle life.

Lower replacement costs.

Less downtime.

Reduces effects of corrosive environment.

Prevents contamination of media.

Reduces connections, mounting space, and overall cost.

Specifications

Materials of Construction

Wetted: PFA, Modified PTFE

Non-wetted: PFA, PVDF, Viton seals, PTFE coated SS springs

Pressure Ranges

Forward: 27" HG vacuum (913 mbar) to 80 PSIG (5.5 bar) with 20 PSIG (1.4 bar) maximum back pressure

Backward: 27" HG vacuum (913 mbar) to 80 PSIG (5.5 bar) with 50 PSIG (3.4 bar) maximum back pressure

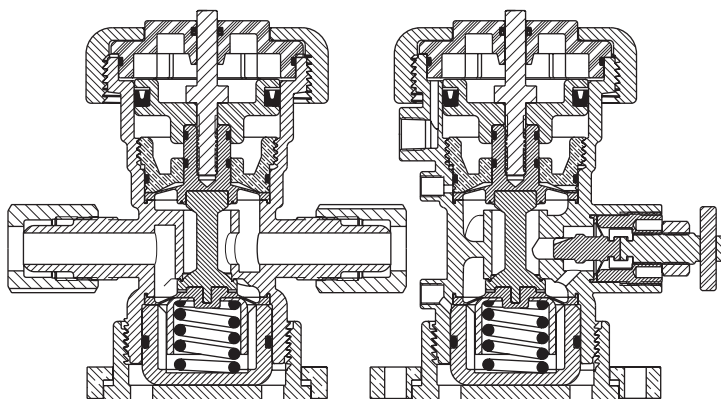
Actuator: 60 PSIG (4.2 bar) to 100 PSIG (7 bar)

Pressure ranges for operation at ambient temperatures. For use at higher temperatures consult Pressure/Temperature chart on page 3.

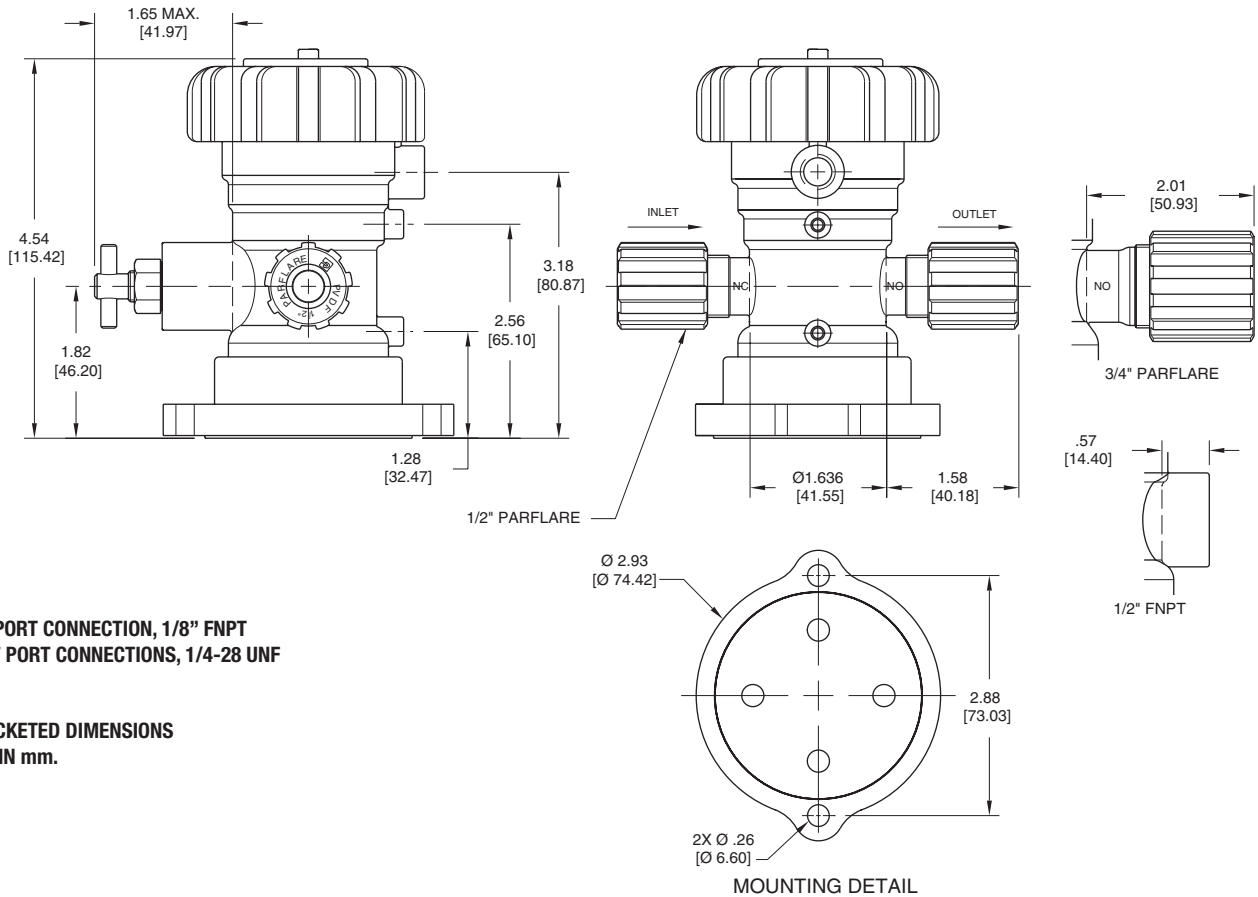
Temperature Ranges

Ambient: 0° - 150° F (-17° - 66° C)

Fluid: 0° - 266° F (-17° - 130° C)

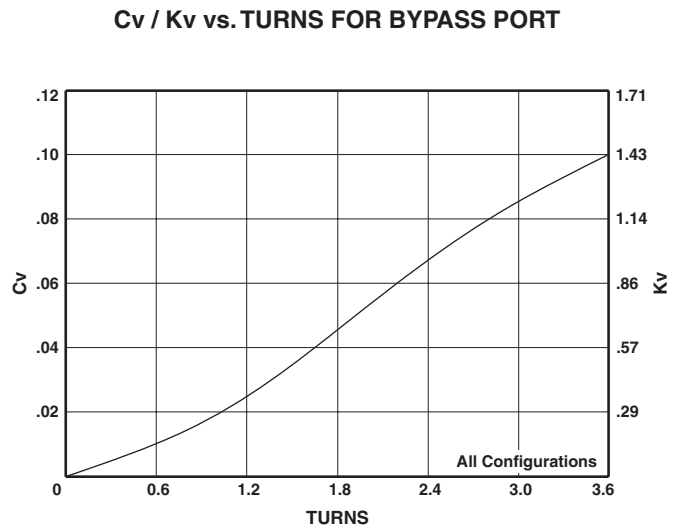
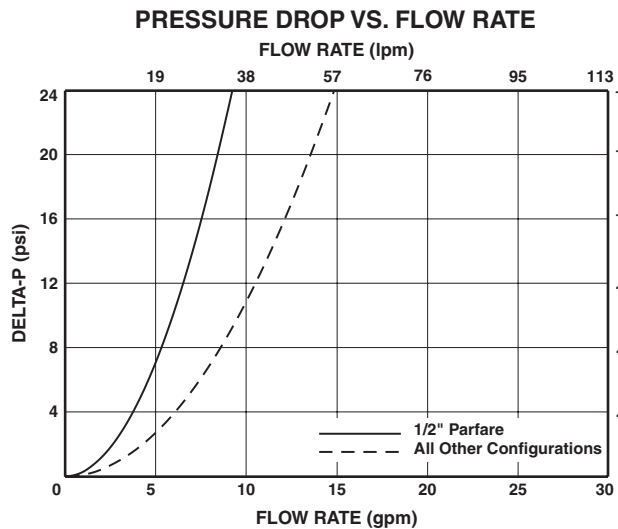


PV-11 1/2" Pneumatic Adjustable Bypass Valve



Model Number	Cv	Kv	Flow Configuration	Port Configuration
PV-11-301	1.9	27.1	NC	1/2" Parflare
PV-11-302	2.8	40.0		3/4" Parflare
PV-11-305	2.8	40.0		1/2" FNPT

Parflare models are supplied with PVDF nuts. For PFA nuts add -T to model number.



PV-12 1" Pneumatic 2 Way Valve

Product Overview

The PV-12 Diaphragm Valve is designed for use in high purity semiconductor applications, and is also ideally suited for ultra-pure water and aggressive chemical or gas applications. The design utilizes a molded high purity PFA body with precision machined seat and diaphragm sealing areas. A one piece machined modified PTFE diaphragm is also utilized for excellent flexibility and life. A full 1" orifice provides maximum flow capability in a compact package.



Features

One piece precision machined diaphragm manufactured from the latest technology modified PTFE. Provides over five times the flexural life as compared to conventional PTFE. Tongue and groove seat and diaphragm for positive through flow shut off and diaphragm to body seal.

PVDF coated stainless steel spring.

Submersible option isolates all valve components from the external environment.

Benefits

High cycle life.

Lower replacement costs.

Less downtime.

Reduces effects of corrosive environments.

Valve remains functional while operating in wet or gaseous corrosive environments.

Specifications

Materials of Construction

Wetted: PFA, Modified PTFE

Non-wetted: PFA, PVDF, Viton seals, PTFE coated SS springs

Pressure Ranges

Forward: 27" HG vacuum (913 mbar) to 100 PSIG (7 bar)

Backward: 80 PSIG (5.5 bar) with 100 PSIG (3.4 bar) inlet pressure
100 PSIG (7 bar) with 60 PSIG (4.2 bar) inlet pressure

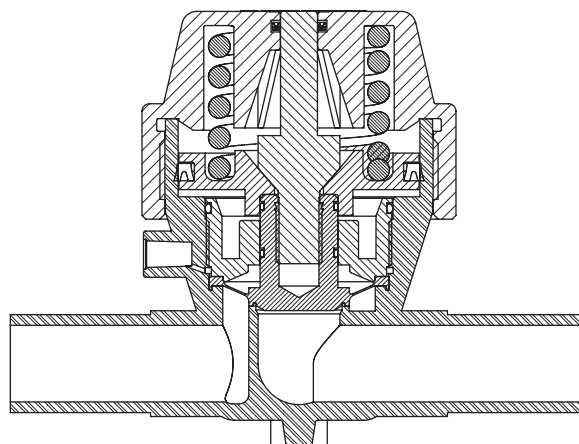
Actuator: 60 PSIG (4.2 bar) to 100 PSIG (7 bar)

Pressure ranges for operation at ambient temperatures. For use at higher temperatures consult Pressure/Temperature chart on page 3.

Temperature Ranges

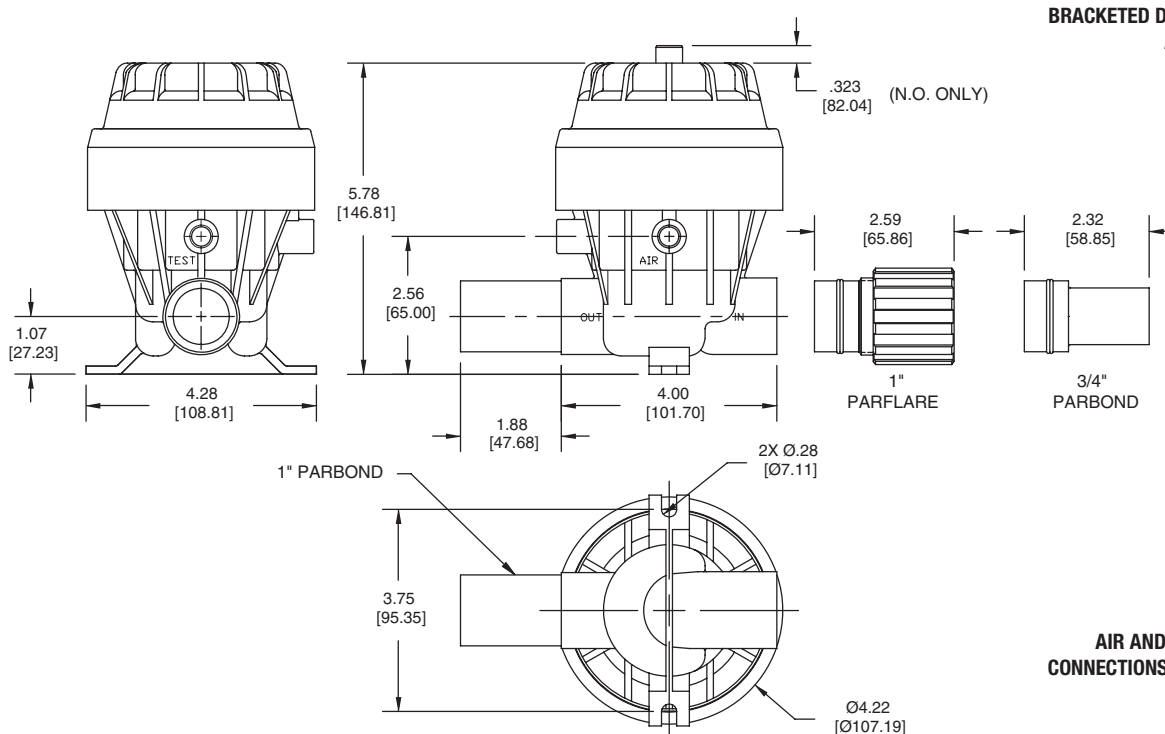
Ambient: 0° - 150° F (-17° - 66° C)

Fluid: 0° - 266° F (-17° - 130° C)



Normally Closed shown

PV-12 1" Pneumatic 2 Way Valve



Model Number	Cv	Kv	Flow Config.	Port Config.	Model Number	Cv	Kv	Flow Config.	Port Config.
PV-12-001	15.7	224.2	N C	1" Parbond	PV-12-005	15.7	224.2	N O	1" Parbond
PV-12-002	13.3	189.9		1" Parflare	PV-12-006	13.3	189.9		1" Parflare
PV-12-003	9.6	142.8		3/4" Parbond	PV-12-007	9.6	142.8		3/4" Parbond

Parflare models are supplied with PVDF nuts. For PFA nuts add -T to model number.

