

CV

Check  
Valves

SH

Shuttle  
Valves

LM

Load/Motor  
Controls

FC

Flow  
Controls

PC

Pressure  
Controls

LE

Logic  
Elements

DC

Directional  
Controls

MV

Manual  
Valves

SV

Solenoid  
Valves

PV

Proportional  
Valves

CE

Coils &  
Electronics

BC

Bodies &  
Cavities

TD

Technical  
Data

## General Description

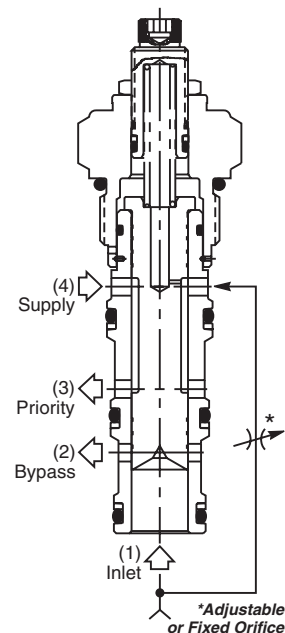
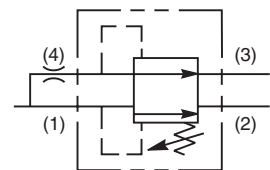
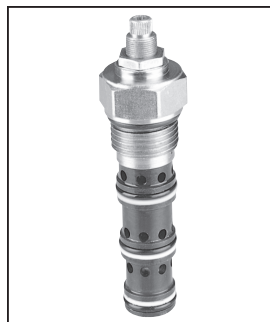
Priority Type Pressure Compensator. This valve is designed to be used in conjunction with an external orifice (fixed or variable) to provide a constant flow to the priority port. Excess flow is bypassed through port 2. For additional information see Technical Tips on pages FC1-FC4.

## Features

- Hardened, precision ground parts for durability
- Stable and quiet response
- Contamination tolerant
- Standard valve bodies and common cavities
- Steel variations and other options available
- All external parts zinc plated

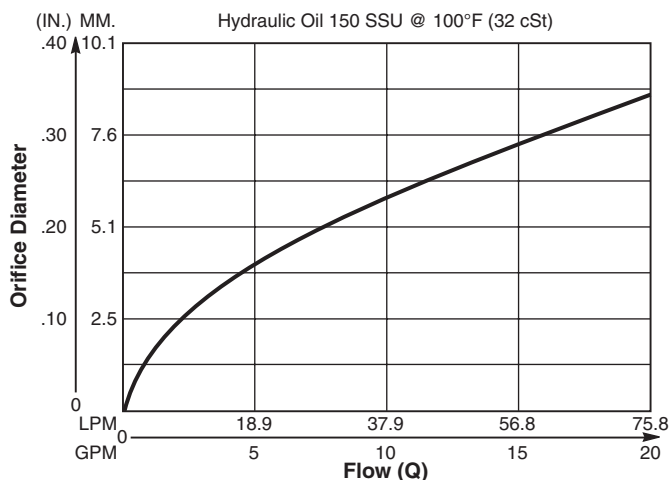
## Specifications

<b>Rated Flow</b>	<b>Inlet Flow Setting</b>	95 LPM (25 GPM) 75 LPM (20 GPM)
<b>Maximum Inlet Pressure</b>		380 Bar (5500 PSI)
<b>Cartridge Material</b>		All parts steel. All operating parts hardened steel.
<b>Operating Temp. Range/Seals</b>		-34°C to +121°C (Nitrile) (-30°F to +250°F) -26°C to +204°C (Fluorocarbon) (-15°F to +400°F)
<b>Fluid Compatibility/Viscosity</b>		Mineral-based or synthetic with lubricating properties at viscosities of 45 to 2000 SSU (6 to 420 cSt)
<b>Filtration</b>		ISO-4406 18/16/13, SAE Class 4
<b>Approx. Weight</b>		.28 kg (.62 lbs.)
<b>Cavity</b>		C12-4 (See BC Section for more details)
<b>Form Tool</b>		Rougher NFT12-4R Finisher NFT12-4F

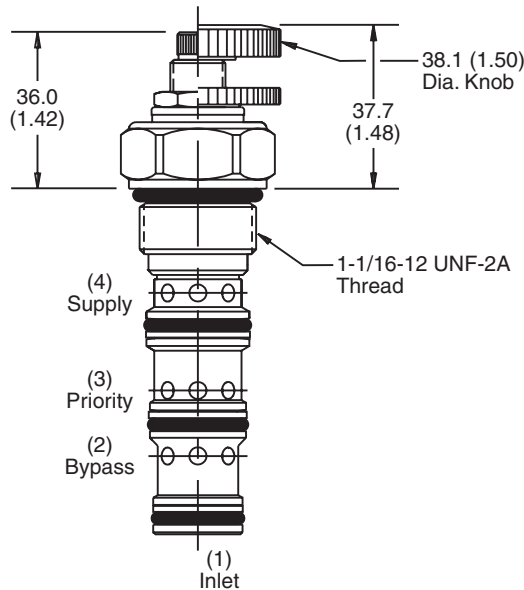


To control flow, install an adjustable needle valve or a fixed orifice in the supply line or manifold ahead of Port 4. The flow curve below, shows an approximate pressure compensated flow vs. orifice size. Excess flow will exit the bypass Port 2. Pressure compensated flow will exit Port 3.

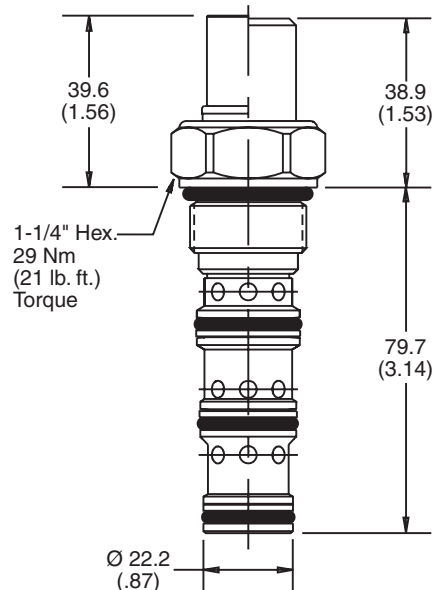
## Performance Curve Flow vs. Orifice Diameter (Through cartridge only)



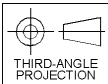
Dimensions    Millimeters (Inches)



Screw/Knob Version



Fixed Cap/Tamper Resistant Version



Ordering Information

**FCPH121**

12 Size Pressure Compensator Priority Type

Adjustment Style    Pressure Differential    Seals    Body Material    Port Size

Code	Adjustment Style
F	Fixed style, present at factory
K	Knob Adjust (717784-15)
S	Screw Adjust
T	Tamper Resistant Cap (717785)

Code	Pressure Differential
Omit	11 Bar (160 PSI)
04	2.8 Bar (40 PSI)
08	5.5 Bar (80 PSI)
24	16.6 Bar (240 PSI)

Code	Seals / Kit. No.
Omit	Nitrile / (SK12-4)
V	Fluorocarbon / (SK12-4V)

Code	Body Material
Omit	Steel
A	Aluminum

Code	Port Size	Body Part No.
Omit	Cartridge Only	
12T	SAE-12	(B12-4-*12T)

\* Add "A" for aluminum, omit for steel.